

WHITEPAPER

Qloud Cover Writeback



STRETCH
QONNECT



Qloud Cover

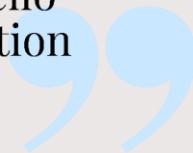
Qloud Cover Writeback

Turn your Qlik dashboards into interactive data hubs

Qloud Cover Writeback brings true interactivity to Qlik environments. Empower teams to not only visualize and analyze but also edit and input data directly in Qlik apps.

Whether enriching existing records, adding qualitative insights, or collaborating on plans, Qloud Cover Writeback transforms your dashboards into dynamic, collaborative spaces.

Say goodbye to the limitations of traditional data interaction and hello to a new era of dynamic collaboration and actionable insights.



With Qloud Cover Writeback, you empower your team to not only analyze data but to actively engage with it, fostering collaboration, insights, and action, transforming the way you interact with data today.

Why Qloud Cover Writeback?

Qlik is powerful for data visualization — but without the ability to write back, data workflows stop at analysis.

Qloud Cover Writeback bridges that gap. It allows you to capture new data, edit records, and instantly sync updates across your data warehouse and

apps. Built for both SaaS and on-premise deployments, Writeback ensures flexibility, security, and ease of use for enterprise data teams.

Key functionalities

Direct input and editing in Qlik

Enable users to interact with dashboards like never before. Users can comment, update, and edit existing records directly from Qlik Sheets, enhancing decision-making processes with collaborative inputs. Data changes are synced instantly to connected databases.

Flexible input types

Qcloud Cover Writeback supports a wide variety of input formats, including text, number, checkbox, dropdown, radio buttons, and more. This flexibility ensures support for diverse use cases from planning to data correction.

Real-time synchronization

Writeback actions are processed instantly. When data is edited in Qlik, changes are immediately reflected in the connected databases, keeping all users and systems up to date in real-time.

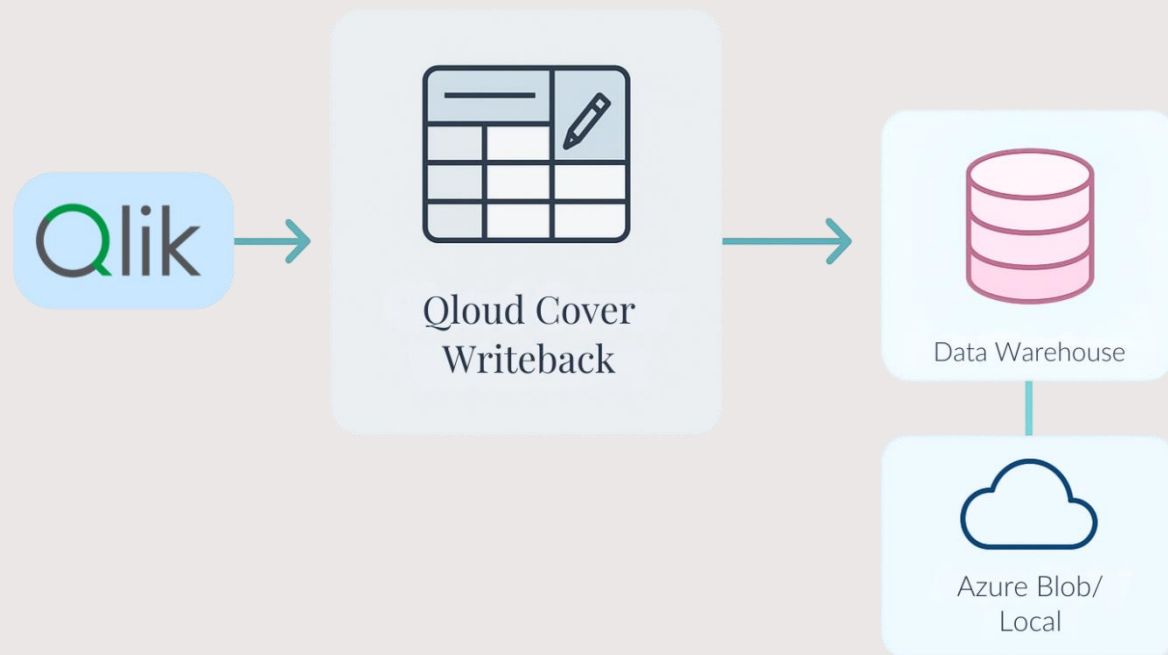
Secure & scalable architecture

Deploy Writeback via SaaS (hosted on Azure) or Client Managed options. Both models feature encrypted operational databases, no user data stored internally, and bring-your-own-log storage for audit trails. Local deployments also support air-gapped environments.

Comprehensive logging and auditing

Capture user ID, timestamps, and change records for all writeback actions. Global roles manage access in SaaS, ensuring secure collaboration.

With a bring-your-own-storage approach, customers remain in control of their backups at all times. Deployment options include both SaaS and on-premises installations.



Technical architecture

Qloud Cover Writeback integrates seamlessly with Qlik Cloud and Qlik Client Managed. Supported data warehouses include:

- BigQuery
- Snowflake
- Amazon Redshift
- SAP ACE
- Microsoft SQL Server

Security and flexibility are ensured via:

- OAuth and Azure AD integration for authentication
- Full encryption for operational databases
- TLS 1.3 for data transfer
- Bring-your-own log storage (Azure Blob or server filesystem)



Connections

[Add Connection](#)



Stretch Snowflake Writeback

Generic connection for Stretch Dev and Demo, connects to DB: demo_db, SCHEMA: writebackproductdemo

[Details](#)

[Edit](#)



Stretch Redshift

Redshift connection

[Details](#)

[Edit](#)



Qloud Cover Big Query

Connection for Google Big Query

[Details](#)

[Edit](#)



Stretch production

Connection to DB StretchProduction and Schema Writeback_License

[Details](#)

[Edit](#)



Microsoft SQL Server

Connect to database WritebackDemo

[Details](#)

[Edit](#)

Qloud Cover Writback Service: Example of set up source/database connections.

How does it work?

Qloud Cover Writeback offers a seamless and interactive experience for updating and annotating data directly within the Qlik environment. Here's how it streamlines your data interaction:

1. **Set up your connectionsInitial setup and configuration**

Create a connection to your desired data warehouse. Download the Qloud Cover Writeback extension and install the extension in Qlik Cloud or Qlik Sense.

2. **Extension Integration**

Deploy the extension within your Qlik applications. This extension allows users to input and modify data directly through an interactive data table integrated into your Qlik dashboards.

3. **Data interaction and entry**

Interact with the data directly in Qlik. Enter new data, modify existing data, and annotate directly through the interactive table. Yes, it's collaborative and dynamic!

4. **Real-time data sync**

Changes made via the Qloud Cover Writeback extension are immediately written back to the connected database, ensuring all modifications are synchronized across platforms in real-time. This enables other applications and users to access the updated data without delays.

5. **Flexible and scalable**

Customize the setup, such as defining the input types, configuring user roles, and setting up data validations. Easily scale up Writeback implementation to include more data sources and handle increased volumes, if needed. And there we are...happy Writebacking.

Use cases

Looking for another reason to start your Qloud Cover Writeback journey? Annotating and enriching datasets with qualitative insights adds new dimensions to analysis. Correcting or adjusting live data models becomes seamless, ensuring data accuracy without external processes.

Organizations across industries can trust the solution in critical scenarios, such as:

- Collaborative planning and forecasting directly in Qlik
- Annotating and enriching datasets with qualitative insights
- Correcting or adjusting live data models
- Exception management and business rule inputs
- Real-time updates for downstream systems via instant sync

Security logging

Security is paramount with Qloud Cover Writeback. The platform ensures no user data is stored internally, meeting strict compliance needs. All writeback activities are logged, capturing:

- User ID
- Timestamps
- Change records

Logs are stored securely and controlled entirely by the customer:

- In SaaS: Azure Blob Storage
- In Client Managed: Locally on the server filesystem

While logs are unencrypted, Stretch Qconnect has no access to any customer log data.

Role-based access controls (global roles) ensure authorized use only, while multi-tenancy in SaaS supports enterprise scale. Additionally, Client Managed deployments offer isolated environments, supporting air-gapped setups where needed.

Scalability & roadmap

Qloud Cover Writeback is built for scale. Today, it handles transactional and collaborative use cases exceptionally well. Bulk writeback functionality is also on the roadmap to support larger-scale scenarios.

Future roadmap highlights include:

- Partial reload triggers when new rows are inserted, automatically updating Qlik data models
- Automation triggers based on writeback actions to streamline workflows
- Improved extension UI, including searchable input definitions and advanced filters for better user experience

Licensing

Licensing is based on storage size (amount of apps backed up) and user capacity, following a clear T-shirt sizing model. This makes scaling predictable and manageable as your business needs or Qlik environment grows. Below is an overview of the monthly and yearly pricing for user-based and capacity-based licensing in USD.

Package	User-based	Capacity-based	Price monthly	Price yearly
Small	Up to 100 users	Up to 100GB	400 USD	3.840 USD
Medium	Up to 500 users	Up to 500GB	600 USD	5.760 USD
Large	Up to 1.000 users	Up to 1TB	900 USD	8.640 USD
X-Large	2.000 users	Up to 2TB	1.200 USD	11.520 USD
Enterprise	Unlimited	Unlimited	Contact	Contact

How to get started

- Go to the portal at qloudcover.com.
- Click on “products” à click on “**Qloud Cover Writeback**”.
- Click on “**TRY NOW**”, follow the steps and access the product directly or fill out the contact form at the bottom of the page for a personalized demo.

A part of the Qloud Cover product line

Unlock the full potential of your Qlik experience with our exclusive suite of tools designed to enhance and streamline your workflows.

At Stretch Qconnect, we've developed Qloud Cover to specifically cater to the needs of developers, data scientists, and analysts who rely on Qlik for their data visualization and analytics projects.

Why Qloud Cover?

Qloud Cover is not just another add-on; it's a necessity for those looking to enhance their Qlik capabilities. Developed by Stretch Qconnect, these tools fill the gaps that Qlik itself hasn't addressed, offering you a smoother, more efficient, and more productive working experience.

Dive into a world where data management is simplified, and your analytics capabilities are expanded. Join us at Qloud Cover, and transform the way you use Qlik today!

Powered by Stretch Qconnect

Stretch Qconnect are the creators behind the Qloud Cover Platform. We are certified Elite Solution Provider and former Qlik Global Innovation Provider of the Year based in Copenhagen, Denmark and Malmö and Stockholm in Sweden.

By leveraging Qlik consultants from Stretch Qconnect, you ensure that your environment adheres to best practices, enabling maximum value generation for your users, customers, and business operations.

As a Qlik certified Elite Channel Partner and the proud recipient of the 2020 Qlik Solution Provider of the Year award in EMEA (Europe, Middle East, Africa), we've earned our reputation through years of unwavering dedication to creating innovative, value-driven business intelligence solutions using the full potential of the Qlik platform.

Check us out at: stretchqconnect.com.

Contact

Qloud Cover

qloudcover.com

Stretch Qconnect

www.stretchqconnect.com

Mail

info@stretchqconnect.dk

qconnect@stretch.dk

LinkedIn

@StretchQconnect





**STRETCH
QONNECT**



Qloud Cover